



India Meteorological Department
(Ministry of Earth Sciences)

BULLETIN NO. : 19 (BOB/07/2022)

TIME OF ISSUE: 1400 HOURS IST DATED: 22.08.2022
FROM: INDIA METEOROLOGICAL DEPARTMENT (FAX NO. 24643965/24699216/24623220)
TO: CONTROL ROOM, NDM, MINISTRY OF HOME AFFAIRS (FAX.NO. 23093750)
CONTROL ROOM NDMA (FAX.NO. 26701729)
CABINET SECRETARIAT (FAX.NO.23012284, 23018638)
PS TO HON'BLE MINISTER FOR S & T AND EARTH SCIENCES (FAX NO.23316745)
SECRETARY, MOES (FAX NO. 24629777)
H.Q. (INTEGRATED DEFENCE STAFF AND CDS) (FAX NO. 23005137/23005147)
DIRECTOR GENERAL, DOORDARSHAN (23385843)
DIRECTOR GENERAL, AIR (23421105, 23421219)
PIB MOES (FAX NO. 23389042)
UNI (FAX NO. 23355841)
D.G. NATIONAL DISASTER RESPONSE FORCE (NDRF) (FAX NO. 26105912, 2436 3260)
DIRECTOR, PUNCTUALITY, INDIAN RAILWAYS (FAX NO. 23388503)
CHIEF SECRETARY, CHATTISGARH (FAX NO. 771-2221206)
CHIEF SECRETARY, GOVT. OF MADHYA PRADESH (FAX NO. 755-2441076)
CHIEF SECRETARY, GOVT. OF MAHARASHTRA (FAX NO. 022- 22028594)
CHIEF SECRETARY, GOVT. OF UTTAR PRADESH (FAX NO. 522- 2239283)
CHIEF SECRETARY, GOVT. OF RAJASTHAN (FAX NO. 0141-2227114)
CHIEF SECRETARY, GOVT. OF GUJARAT (FAX NO. 079-23250305)
CHIEF SECRETARY, GOVT. OF HARYANA (NA)
CHIEF SECRETARY, GOVT. OF DELHI (011-23392102)

Sub: Depression over Northwest Madhya Pradesh and adjoining East Rajasthan & Southwest Uttar Pradesh

The depression over Northeast Madhya Pradesh and adjoining Southwest Uttar Pradesh moved nearly westwards during past 06 hours with a speed of 20 kmph and lay centered at 1130 hrs IST of 22nd August, 2022 over Northwest Madhya Pradesh and adjoining East Rajasthan & Southwest Uttar Pradesh near latitude 24.3°N and longitude 77.8°E, about 60 km east-southeast of Guna (Madhya Pradesh), 100 km west-northwest of Sagar (Madhya Pradesh) and 280 km east of Kota (Rajasthan).

It is likely to move nearly westwards across northwest Madhya Pradesh towards East Rajasthan and weaken into a Well Marked Low Pressure Area by tomorrow morning.

Forecast track and intensity are given in the following table:

Date/Time(IST)	Position (Lat. °N/ long. °E)	Maximum sustained surface wind speed (Kmph)	Category of cyclonic disturbance
22.08.22/1130	24.3/77.8	35-45 gusting to 55	Depression
22.08.22/1730	24.3/76.8	30-40 gusting to 50	Depression
22.08.22/2330	24.4/75.7	30-40 gusting to 50	Depression
23.08.22/0530	24.4/74.6	20-30 gusting to 40	Well Marked Low

Warnings:

Rainfall:

22nd August: Rainfall at most places with **heavy to extremely heavy rainfall** at isolated places is very likely over west Madhya Pradesh and East Rajasthan; **heavy to very heavy rainfall** at isolated places is very likely over North Gujarat region and **heavy rainfall** at isolated places is very likely over East Madhya Pradesh, West Rajasthan & north Madhya Maharashtra.

23rd August: Rainfall at most places with **heavy to very heavy rainfall** at isolated places is likely over south Rajasthan & North Gujarat and **heavy rainfall** at isolated places is likely over West Madhya Pradesh and South Gujarat.

24th August: Rainfall at most places with heavy rainfall at isolated places is likely over Southwest Rajasthan and adjoining Kutch area.

Wind:

- **Squally wind speed reaching 35-45 gusting to 55 kmph** is very likely over East Rajasthan, West Madhya Pradesh and adjoining areas of East Madhya Pradesh & southwest Uttar Pradesh during next 24 hours and **strong winds speed reaching 25-35 kmph gusting to 45 kmph** is very likely to prevail over South Haryana & Delhi during next 24 hours and over West Rajasthan from tonight for subsequent 24 hours.

Damage expected over Central parts of Madhya Pradesh and adjoining Southwest Uttar Pradesh:

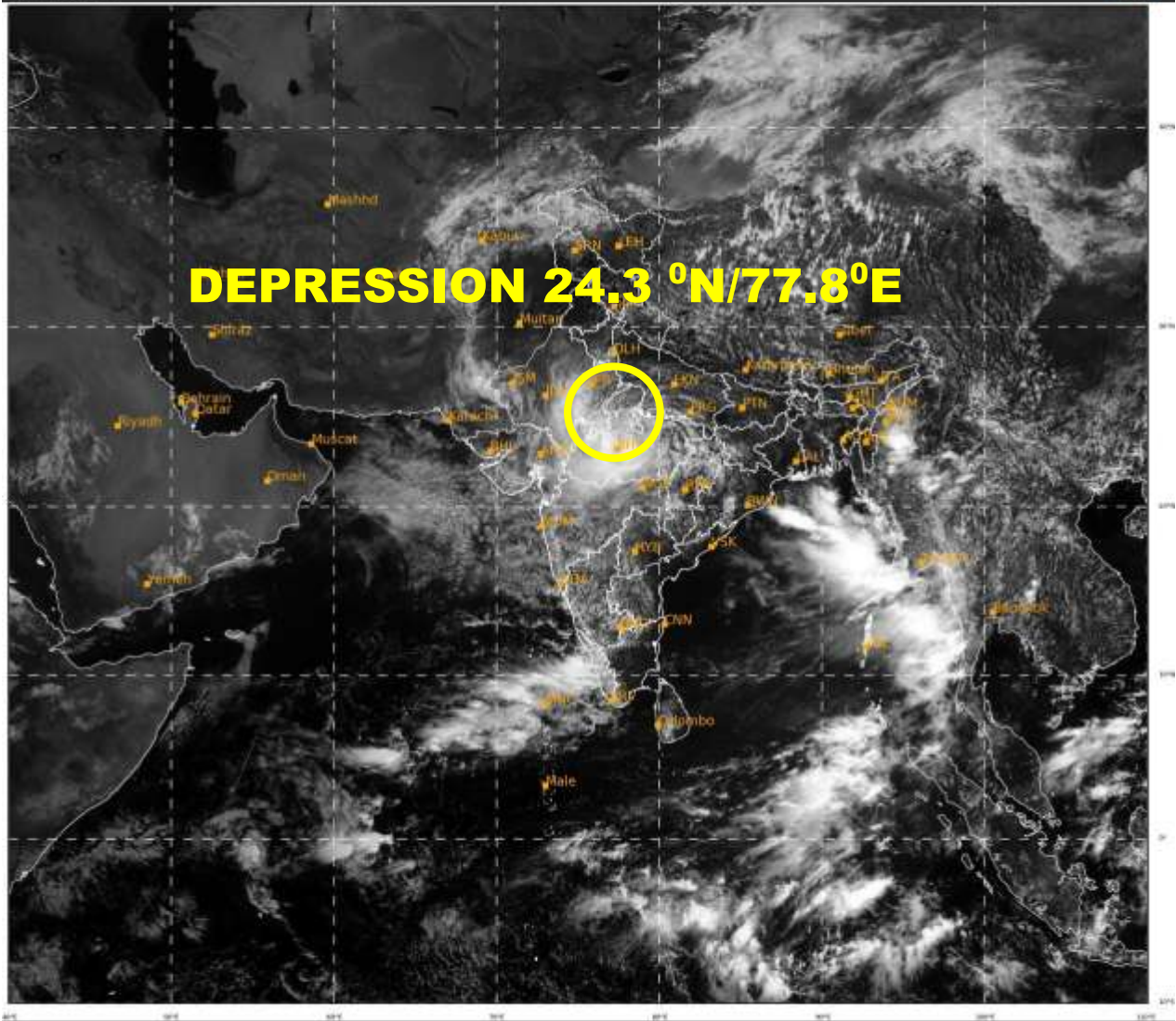
- Damage to loose/unsecured structures. Some breaches in Kutcha road & embankments due to flooding.
- Damage to small trees like Banana, Papaya etc. Damage to standing crops and horticulture.
- Localized Flooding of roads, water logging in low lying areas and closure of underpasses.
- Reduction in visibility due to heavy rainfall.
- Disruption of traffic in major cities due to water logging in roads.
- It may lead to riverine flooding in some river catchments (for riverine flooding please visit Web page of CWC)

Next Bulletin will be issued at 2030 hours IST of today, the 22nd August, 2022.

(M. Sharma)
Scientist D, Cyclone Warning Division, New Delhi

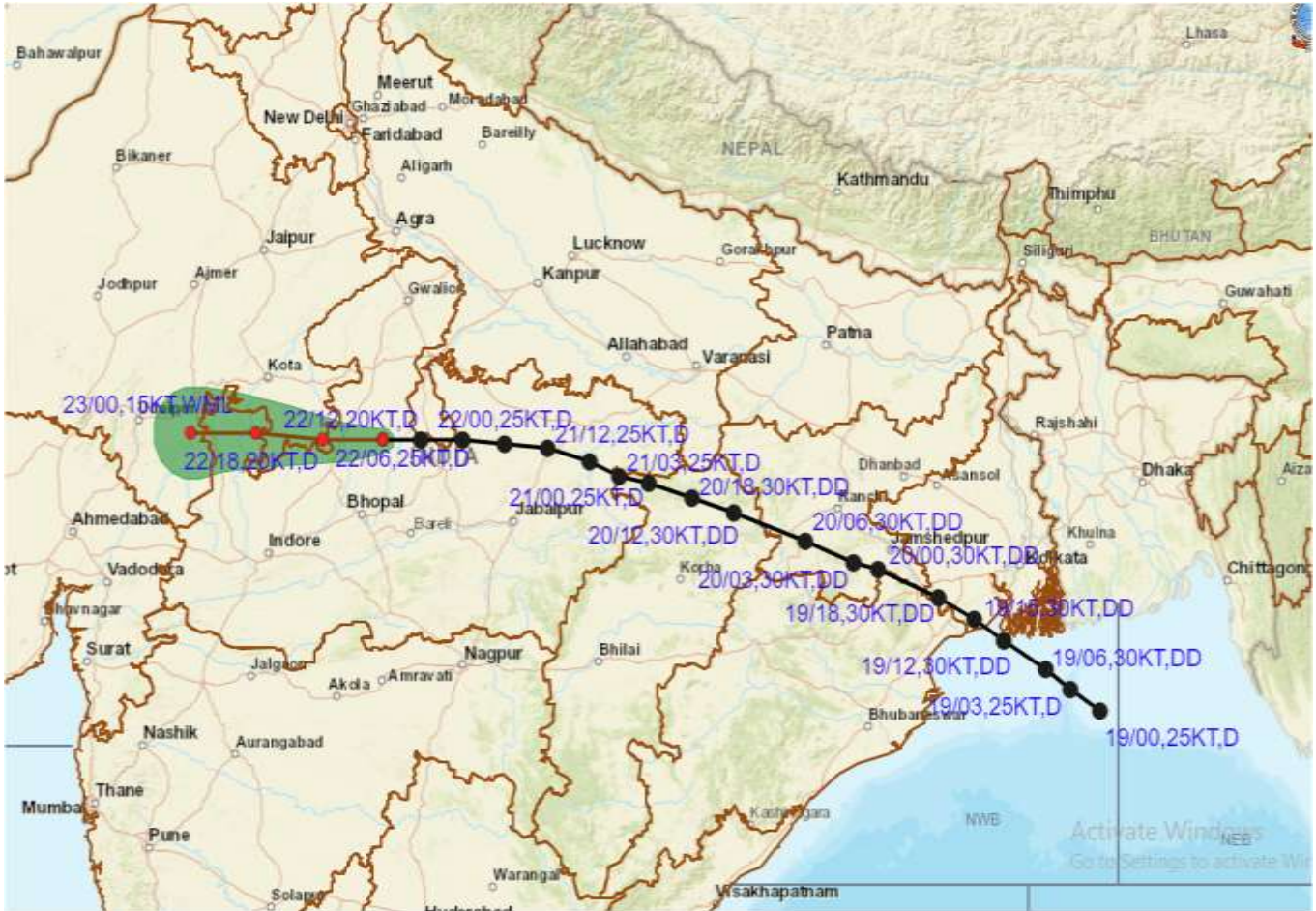
Copy to: ACWC Mumbai/ ACWC Kolkata/ ACWC Chennai/ CWC Bhubaneswar/CWCVisakhapatnam/ / MO Port Blair/MC Raipur/MC Bhopal/MC Hyderabad/RMC Nagpur/RMC New Delhi/MC Jaipur

LEGEND: Heavy Rainfall: 64.5 to 115.5mm, **Very Heavy Rainfall:** 115.6 to 204.4mm **Extremely Heavy Rainfall:** more than 204.5 mm, **Most Places:** more than 76% of total stations, **Many Places:** 50% to 75% of total stations, **Isolated Places:** Less than 25% of total stations





OBSERVED AND FORECAST TRACK ALONGWITH CONE OF UNCERTAINTY OF DEPRESSION OVER NORTHWEST MADHYA PRADESH AND ADJOINING EAST RAJASTHAN & SOUTHWEST UTTAR PRADESH BASED ON 0600 UTC OF 22ST AUGUST, 2022



DATE/TIME IN UTC

IST=UTC + 0530

L: LOW PRESSURE AREA

WML: WELL MARKED LOW PRESSURE AREA

D: DEPRESSION (17-27 KT)

DD: DEEP DEPRESSION (28-33 KT)

CS: CYCLONIC STORM (34-47 KT)

SCS: SEVERE CYCLONIC STORM (48-63KT)

VSCS: VERY SEVERE CYCLONIC STORM (64-89 KT)

ESCS: EXTREMELY SEVERE CYCLONIC STORM (90-119 KT)

SuCS: SUPER CYCLONIC STORM (≥ 120 KT)

● LESS THAN 34 KT

☞ 34-47 KT

☞ ≥ 48 KT

— OBSERVED TRACK

— FORECAST TRACK

▲ CONE OF UNCERTAINTY

